

BRISTOL BAY

REGIONAL GUIDE





Table of Contents

2	The Bristol Bay Region
4	History of the Region
6	Alaska Native Claims Settlement Act
8	Cultures of Bristol Bay
10	Bristol Bay Lands
12	Subsistence Life
14	Bristol Bay Salmon
16	The State of Alaska
18	Urban and Rural Communities
20	Regional Economy
22	Regional Infrastructure
24	Energy and Fuel Costs
26	Education
28	Bristol Bay Partners
30	Sources

The Bristol Bay Region

The Bristol Bay region, located in Southwest Alaska, is home to 31 villages situated among vast salmon-rich waterways that feed into the Bering Sea.



ABOUT BRISTOL BAY

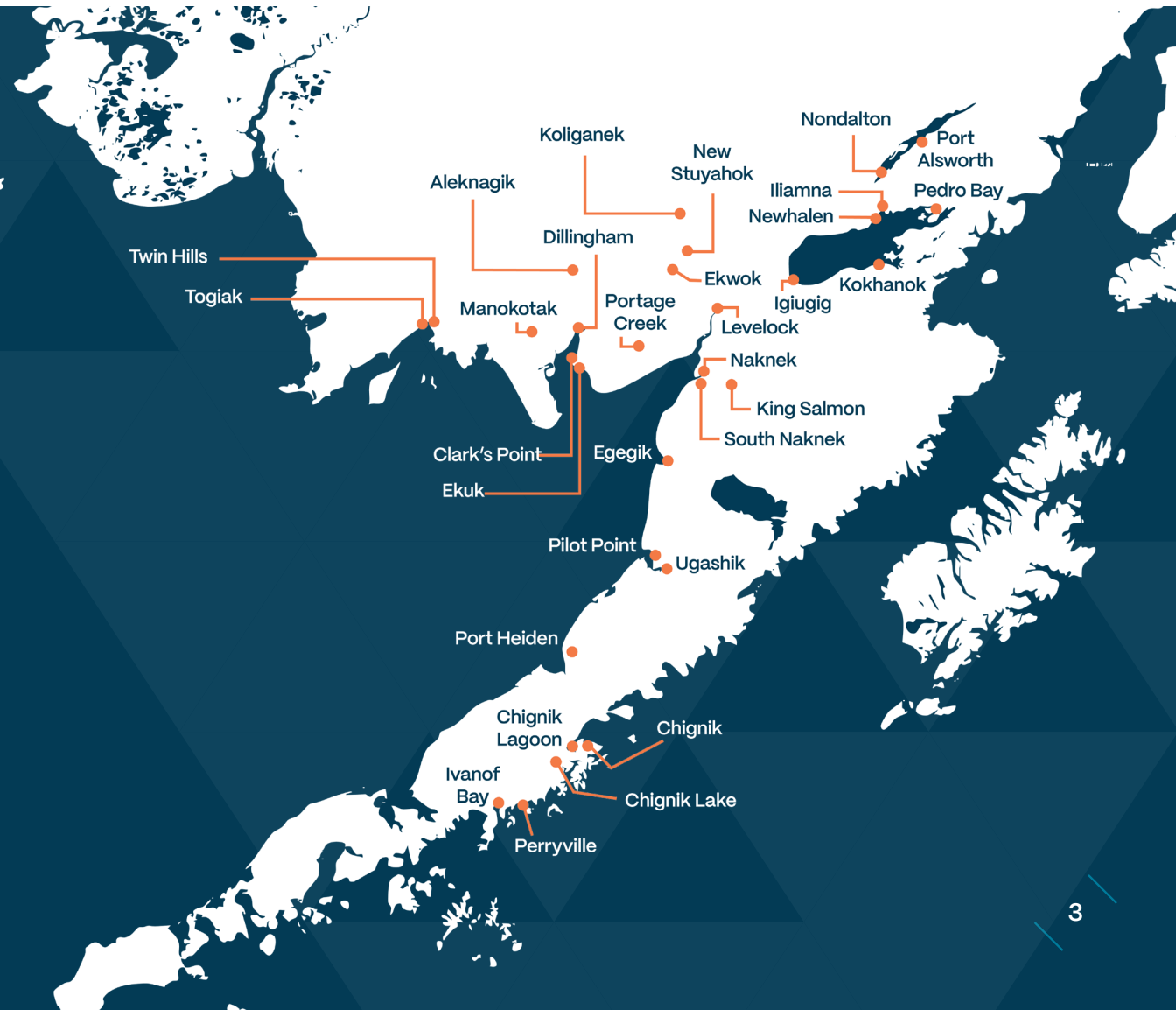
The Bristol Bay region is known for its world-renowned salmon fishery, the product of the prolific watersheds that are the lifeblood of the Alaska Native communities that call it home.

With 40 million acres of land and marine waters, the region is larger than the state of Georgia. And its land mass alone, at 27.5 million acres, is similar to the state of Virginia. The lands and waters of Bristol Bay provide a bounty of natural resources, unspoiled wilderness, and a landscape of mountain ranges, twisting rivers, and abundant wildlife.



Bay Facts

- ◆ The region has a mixed economy of cash and subsistence.
- ◆ The region is remote with no road access to the state's road or highway system. Residents rely on boats, small airplanes, all-terrain vehicles and snowmachines for transportation between communities.
- ◆ The population of Bristol Bay is mainly Alaska Native—nearly 60% to over 70% in some areas.
- ◆ The region is comprised of more than 27.5 million acres of land and 12 million acres of marine water.
- ◆ Bristol Bay is larger than 17 U.S. states when gauged by acres of land.



History of the Region

The Bristol Bay region is home to three main Native cultures and languages: Dena'ina, Sugpiaq/Alutiiq, and Yupiaq/Yup'ik. They have called the Bristol Bay region home for more than 10,000 years, drawn to the abundant resources available.

During the 18th and 19th centuries, those same resources drew the attention of Russian and Western explorers.

The U.S. purchased Russia's interests in Alaska in 1867, and Alaska became the 49th state in 1959, nearly 100 years later. Throughout much of the region's history, salmon has remained the economic staple.



Children under a salmon drying rack.
Alaska State Library, Skinner Foundation Photograph

10,000
YEARS AGO

Early people live and hunt in Bristol Bay.

1778

Bristol Bay is named by Captain James Cook.

1800s

Russian missionaries, explorers, and fur traders arrive.

1883

The first cannery opens in the region.

LATE
1890s

A Russian fort is built at present day Naknek.

1912

The largest volcanic eruption of the 20th century occurs at Novarupta.

1941

During WWII, the military builds a major base in King Salmon.

1959

Alaska becomes the 49th state.

1962

The Bristol Bay Borough incorporates as the state's first borough.

1971

Alaska Native Claims Settlement Act (ANCSA) is signed, securing land rights.

1972

Bristol Bay Native Corporation (BBNC) is formed.

1991

ANCSA amendments address, among other things: permanent alienability prohibitions, protection of undeveloped lands, authorization of additional classes for Alaska Natives and descendants born after December 18, 1971.

2022

BBNC celebrates its 50th anniversary.

Alaska Native Claims Settlement Act

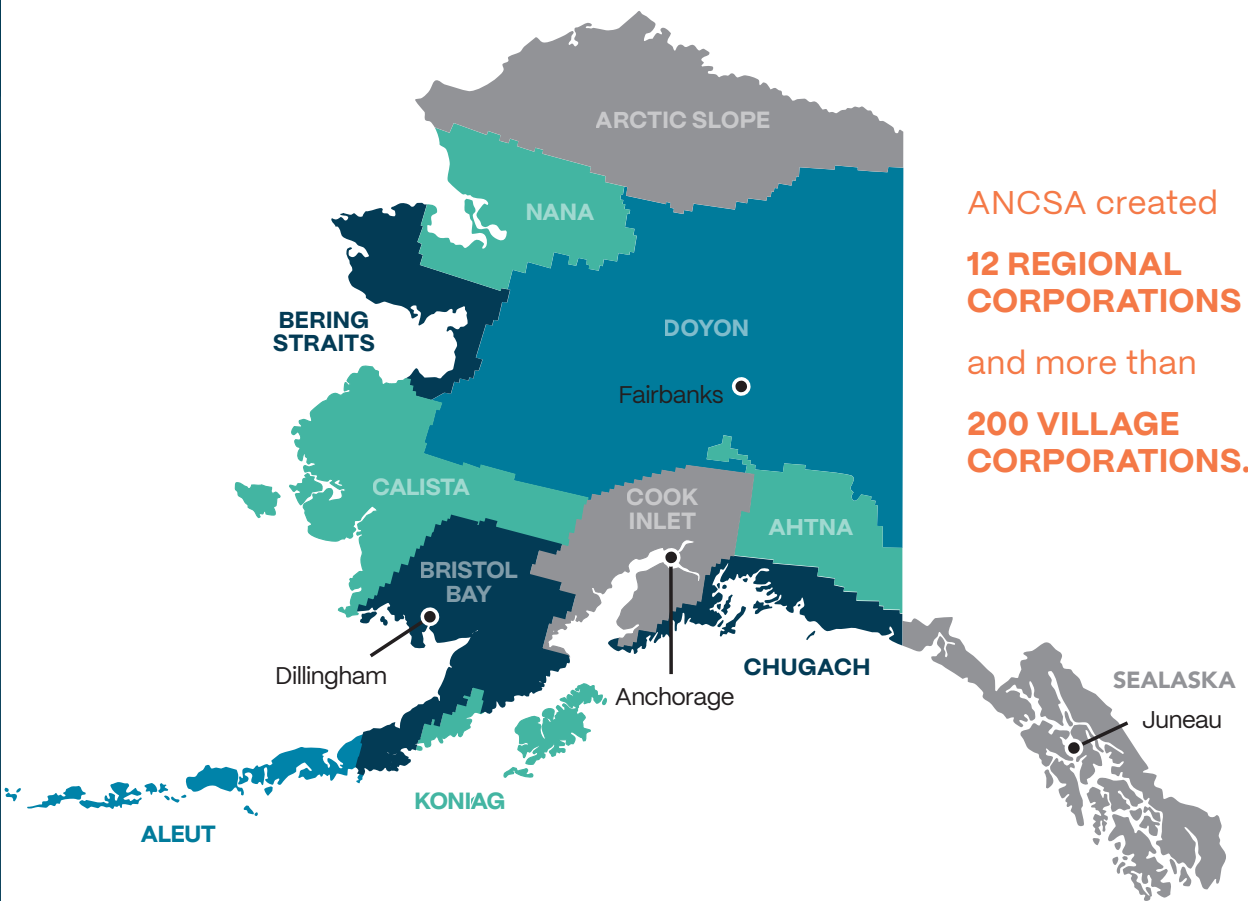
The Alaska Native Claims Settlement Act (ANCSA) of 1971 settled Alaska Native aboriginal land claims. The act, signed by President Richard Nixon, was the largest land claims settlement in U.S. history. ANCSA opened access to vast resources throughout the state, and required each region to create a for-profit corporation to manage the lands and revenues generated.

The Bristol Bay region prioritized its land selections around subsistence and traditional uses, as well as the potential for natural resources. Under ANCSA, corporations received a split estate of three million acres. Village corporations were conveyed title to the surface estate, while Bristol Bay Native Corporation (BBNC), the regional corporation for Bristol Bay, received title to the subsurface estate. Today, BBNC holds title to more than three million subsurface acres and more than 115,000 surface acres.



Bay Facts

- ◆ In 1972 there were 5,401 original BBNC shareholders. Today there are more than 12,000.
- ◆ Each village in the region has a tribal government managed by a tribal council.
- ◆ BBNC shareholders also hold membership in their village corporations as well as their tribal entities.



ANCSA created
**12 REGIONAL
 CORPORATIONS**
 and more than
**200 VILLAGE
 CORPORATIONS.**

ALASKA REGIONAL CORPORATIONS

Under ANCSA, 12 for-profit entities were established to manage the investments and revenues generated for the shareholders of each region, which are paid out in the form of distributions or dividends. Education, job creation, and protection of culture are also a priority.

VILLAGE CORPORATIONS

More than 200 Alaska Native Village Corporations were established throughout the state to represent specific communities within the regions, and manage lands and resources for profit and benefit to shareholders.

TRIBAL COUNCILS

Tribal councils provide their tribal members with infrastructure, healthcare, social services, tribal courts, housing, economic development, and cultural projects. Tribal councils also engage with external entities, such as federal agencies, on behalf of the tribe.

Cultures of Bristol Bay

The Bristol Bay region is home to three distinct cultures, each with traditional customs, Native language, and dialect.

Over the years, these groups have maintained traditions, languages and subsistence practices while incorporating modern influences adopted from explorers and fur traders, missionaries, commercial fishermen and aviators.



The most common languages in the region are Dena'ina, Sugt'stun, and Yugtun.

DENA'INA | The Dena'ina Athabascans occupied lands around Lake Iliamna and Lake Clark. Abundant runs of red salmon, along with moose and caribou, provided a stable food supply. To the Dena'ina, the raven is the creator, and their oral history is filled with raven stories meant to teach and entertain.

SUGPIAQ/ALUTIIQ | Skilled kayakers, the Sugpiaq/Alutiiq people made two types of sea craft: the small, decked canoe, known as the kayak or bidarka, and the large open boat called the angyat or baidar. Their main food sources were seals, whale, salmon, halibut, shellfish, and other sea creatures.

YUPIAQ/YUP'IK | The Yup'ik people on the Bristol Bay side of the peninsula were primarily hunters and fisherman, subsisting on caribou, moose, and other land animals, as well as waterfowl and ptarmigan. Salmon was harvested with the use of gill nets made of spruce root, while smaller fish were taken with scoop nets.

SAY HELLO!

DENA'INA	“Yaghali du” (It is good)
SUGT'STUN	“Cama-i”
YUGTUN	“Cama-i” or “Waqaa”



TRADITIONAL ACTIVITIES

SUBSISTENCE

Fishing, hunting and gathering strengthen communities and families by providing food, materials for traditional uses and a bond across generations.

STEAM HOUSE

The steam house is used for bathing, and to heal minds, bodies and spirits. Herbs or plants are used in the steam house to help with ailments like arthritis.

NATIVE FOODS

Traditional foods include dried meat and fish, mouse food (roots of tundra plants), edible plants, game birds and eggs, and fat and oil from sea animals.

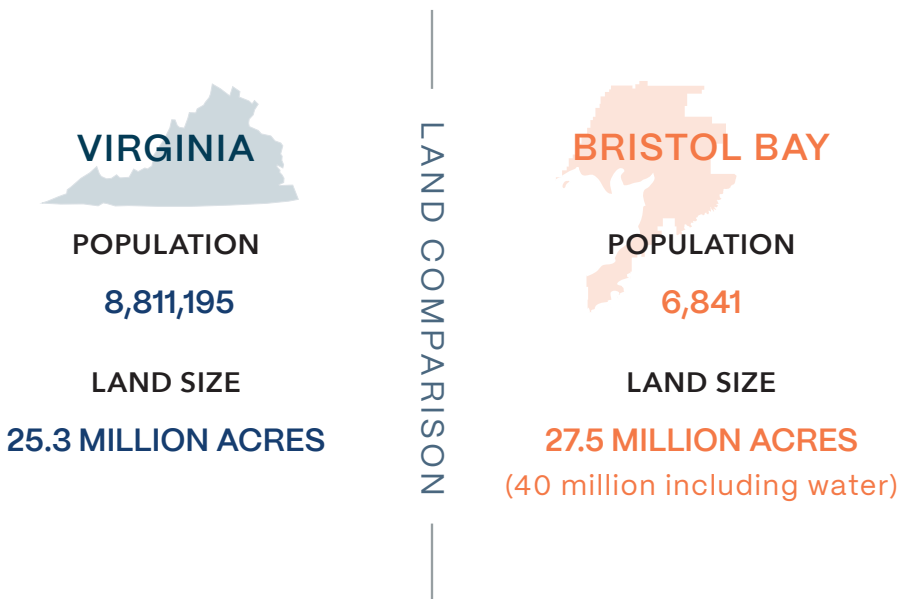


Bay Facts

- ◆ The Alaska Natives of Bristol Bay are among the last salmon-based cultures on earth. They believe eating salmon is essential to their health and connects them with their ancestors and heritage.
- ◆ The Bristol Bay watershed provides habitat for numerous animals, including 29 species of fish, more than 190 types of birds, and more than 40 terrestrial mammals.

Bristol Bay Lands

Much of Bristol Bay is coastline, but it is also home to boreal forests, swamps, highlands, and the immense mountain and volcanic land forms of the southern Alaska/Aleutian Range. The region is habitat to a wide variety of flora, fauna, and wildlife.



Bay Facts

- ◆ BBNC controls the subsurface rights of most land owned by the village corporations, while the village corporations retain surface rights.
- ◆ BBNC observes a "Fish First" value that assesses the impacts that all corporate decisions will have on the region's fisheries, and prioritizes the protection of fish and fish habitat over other uses.
- ◆ 7(i) revenue sharing is an ANCSA provision that distributes revenues from resource development among the regional corporations.

RESPONSIBLE RESOURCE DEVELOPMENT

Responsible resource development upholds the social, environmental, and fiscal sustainability expectations of the residents of the region. This includes capital improvement projects, such as building and improving airports, roads, and landfills. Development of mineral, oil and gas assets are seen as economic opportunities, but most residents only support projects that will have minimal impact on the lands, waters, and fish of Bristol Bay. Traditional and subsistence uses are the priority for land use.

PROPOSED PEBBLE MINE

The proposed Pebble mine has raised many concerns in Bristol Bay. The large copper, gold, and molybdenum deposit is located at the headwaters of the Kvichak and Nushagak rivers, two major rivers that feed into the salmon-rich Bristol Bay fishery. Concerns about the project include dewatering and contamination of the spawning streams, long-term containment of tailings, and the potential sociocultural effects the project could cause.

ANCSA AND LAND RIGHTS

Under ANCSA, BBNC was given direct responsibility for three million acres of subsurface estate and full title to an additional 115,000 acres. These patents provide potential revenues from gravel and rock for infrastructure projects to development of mineral and energy resources. All BBNC use and oversight of these lands must satisfy the requirements for responsible resource development.



Subsistence Life

Subsistence activities remain an important part of life in Bristol Bay, and wild foods are considered essential. Seasonal food-gathering practices are shared across regions and generations, bringing families together and shaping social and cultural traditions. Subsistence offers food security in often economically depressed areas, where a cash-only economy is difficult to support.

CULTURAL IMPORTANCE

The importance of subsistence is seen in many aspects of Native culture. Dancers portray stories of their Native way of life to the beat of skin drums. Jewelry, masks, and other art are carved from bone or ivory. Subsistence activities and values are the cornerstone of the residents' way of life, a link to the past and a touchstone for survival and prosperity.

FISH CAMP

Every year, Alaska Natives return to traditional fish camps across the region. These camps are where they gather subsistence salmon for the year, and fish commercially to supplement incomes. Fish are caught, processed, and stored. Traditional methods of treating the fish include smoking and drying fillets on an open rack. Many family fish camps are side-by-side, with Elders and youth living and working side-by-side to put fish away for the season.

TRADITIONAL SMOKED SALMON

- ◆ 10 lbs. fresh salmon ◆ 5 qts. water
- ◆ 2 lbs. brown sugar ◆ 2 lbs. kosher salt

Soak salmon in water, brown sugar and salt for 25 minutes, then hang and smoke until done. Dry for one week and enjoy.



Bay Facts

- ◆ Salmon comprises the majority of the average Alaska Native family's diet.
- ◆ State law requires a reasonable opportunity for subsistence uses first, before providing for other uses.
- ◆ The Alaska Division of Subsistence was established in 1981 to scientifically gather, evaluate and report on traditional uses of fish and wildlife resources.

SUBSISTENCE BY SEASON



SPRING

Shoots and roots
Smelt, shellfish, and lake fish
Seagull and murre egg hunting
Roe and kelp



SUMMER

Fish
Berries
Greens
Bull caribou
Waterfowl and eggs



FALL

Smelt and trout
Game birds
Beluga, seal, and walrus
Moose



WINTER

Caribou
Moose
Mouse food caches (roots of tundra plants)



Bristol Bay Salmon

There are seven types of Pacific salmon. Five occur in North American waters, including Bristol Bay. Chinook, sockeye, coho, pink and chum salmon spawn in the fresh rivers and streams. Tens of millions of salmon return every year to one small area with a delicate ecosystem. This abundance has made Bristol Bay the largest sustainable commercial salmon fishery in the world.

CHINOOK
(king) salmon



SOCKEYE
(red) salmon



COHO
(silver) salmon



PINK
(humpy) salmon



CHUM
(dog) salmon





SUBSISTENCE

In Bristol Bay, salmon make up 50-70% of the subsistence harvest (by pounds of usable food). Nearly 30% of Alaska's entire subsistence sockeye harvest comes from Bristol Bay.

SPORT FISHING

The region is home to some of the premier sport fishing destinations on the globe – waterways as productive now as they were thousands of years ago. These waters are magnets for anglers from all over the world. In 2019, tourism in Bristol Bay generated \$155 million in economic output in Alaska. This includes both sport fishing and bear viewing, a popular salmon-dependent tourist activity.

COMMERCIAL

Commercial fishing is a multi-million dollar industry with an average harvest of around 214 million pounds of salmon annually and an average wholesale value of \$572 million. The industry creates thousands of jobs and provides residents with seasonal work that supplements their subsistence activities.

ECONOMIC IMPACT

Bristol Bay is the world's largest source of wild sockeye salmon. Its inshore sockeye salmon runs regularly exceed 50 million. Fishing brings a significant amount of revenue into the region. Additionally, harvesting, processing, and retailing Bristol Bay salmon creates \$2.2 billion in value across the U.S.

The State of Alaska

- ◆ Alaska encompasses more than 571,000 square miles of land and is the largest state in the U.S. It's also the least densely populated.
- ◆ Alaska became the 49th state in 1959.
- ◆ Alaska's name is rooted in the Unangam Tunuu (Aleut) word *alaxsxaq*, or "the object towards which the action of the sea is directed." This is how the people of the Aleutian Islands referenced the Alaska Peninsula to their east.



STATE DEMOGRAPHICS

POPULATION More than 733,000 people

FEMALE 47.5%

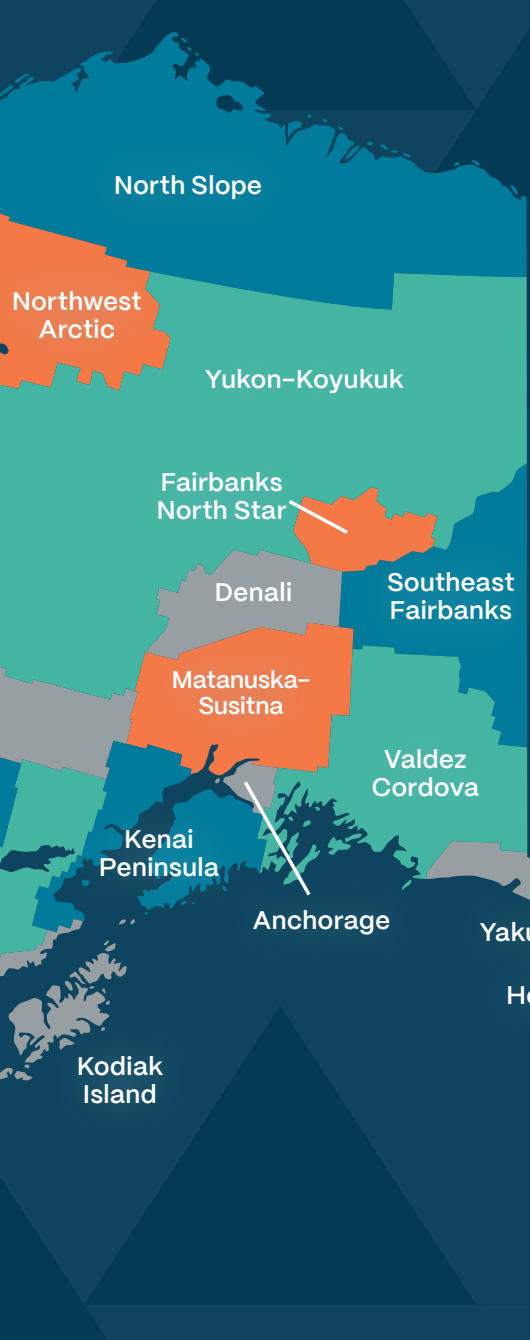
MALE 52.5%

MEDIAN HOUSEHOLD INCOME \$86,631

BACHELOR'S DEGREE (or higher) 32.2%

ALASKA NATIVE 15.2%

Sources: 2020 Decennial Census, 2023 American Community Survey, Census.gov



- ◆ Alaska is home to North America's tallest mountain, Denali (20,310 feet).
- ◆ Alaska shares a 1,538 mile border with Canada. It's the longest international border of any U.S. state.
- ◆ Alaska boasts 33,904 miles of tidal shoreline, which represents approximately 35.5% of the entire U.S. total.
- ◆ Alaska has 19 boroughs and 10 census areas (similar to counties), along with four unified home rule municipalities (Anchorage, Juneau, Sitka, and Wrangell).

ALASKA

Oil
 Tourism
 Fishing
 Timber
 Mining
 Agriculture

MAJOR INDUSTRIES

BRISTOL BAY

Commercial Fishing/Processing
 Tourism
 Federal Government
 State Government

MAJOR EXPORTS

Seafood
 Oil
 Minerals
 Timber

Salmon/Fish
 Sand, Gravel, and Rock

Urban and Rural Communities

Nearly 40% of the state's population is located in Anchorage, the state's largest urban area. The city is located on the shores of Cook Inlet in Southcentral Alaska. Other urban centers are Fairbanks and Juneau, the state capital.

Alaska's urban areas offer a sharp contrast to rural areas and communities. Rural communities are not connected to a road system, relying instead on ATVs, boats, small airplanes, and snowmachines or dog teams in the winter. Access to health care, supplies and provisions is limited, and materials are distributed to isolated villages through hub communities such as Dillingham.

REGIONAL DEMOGRAPHICS

BRISTOL BAY BOROUGH

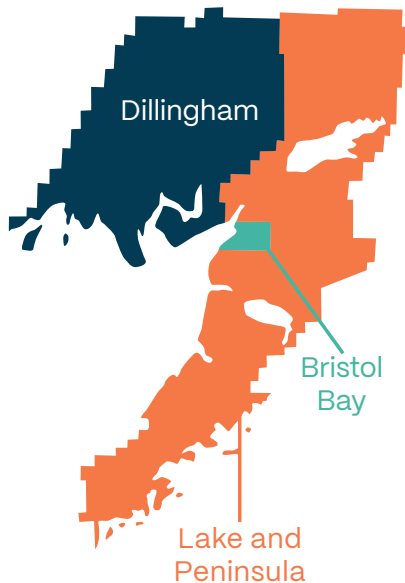
Median Age: 39.3
Avg. Family Size: 3.0
Median Household Income: \$100,625
Persons below poverty level: 9.7%

DILLINGHAM CENSUS AREA

Median Age: 30.9
Avg. Family Size: 3.66
Median Household Income: \$74,250
Persons below poverty level: 16.3%

LAKE AND PENINSULA BOROUGH

Median Age: 33.4
Avg. Family Size: 3.02
Median Household Income: \$64,000
Persons below poverty level: 15.2%



Sources: 2020 Decennial Census,
2023 American Community Survey,
Census.gov



CITY OF DILLINGHAM

Population: 2,084
 Median Household Income:
 \$99,097
 Median Home Value: \$306,800

NAKNEK

Population: 470
 Median Household Income:
 \$91,875
 Median Home Value: \$279,700

NEW STUYAHOK

Population: 466
 Median Household Income:
 \$54,167
 Median Home Value: \$108,000

FAIRBANKS

Population: 32,242
 Median Household Income:
 \$72,077
 Median Home Value: \$255,700

ANCHORAGE

Population: 289,000
 Median Household Income:
 \$98,152
 Median Home Value: \$385,900

JUNEAU

Population: 32,255
 Median Household Income:
 \$100,513
 Median Home Value: \$432,500

Regional Economy

The Bristol Bay region is considered a “mixed economy,” meaning there are both subsistence and cash components.

Households use money to purchase fuel, electricity and family goods – such as clothing and shelter. Residents also use cash to pay for equipment used for subsistence activities: guns and ammunition, fishing nets, boats, ATVs, and snowmachines.

The majority of jobs are in commercial fishing, government, and health care. However, many fishing jobs are temporary and seasonal.

COMMERCIAL FISHING

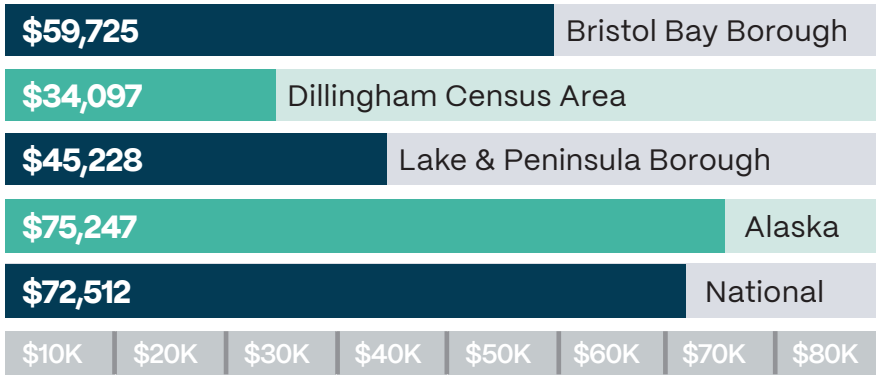
The region is dominated by the commercial sockeye salmon industry, which provides more than 15,000 jobs. Fishing brings seasonal employment, as well as an influx of people who travel to work in canneries and on fishing boats during the summer season. In addition to salmon, the region also has herring and halibut fisheries, although these fisheries have declined in recent years. As a whole, the Bristol Bay region provides more than half of the global sockeye salmon production.

TOURISM

Tourism is the second largest industry in the region. Bristol Bay is a destination for world-class fishing, hunting, and other outdoor recreational activities. Approximately 20,000 people visit Bristol Bay to fish each year. Another 20,000 participate in bear viewing activities. In 2019, tourism in Bristol Bay generated \$67.9 million in labor income.

BBNC began investing in tourism infrastructure in the region in 2012. Its Bristol Adventures portfolio of companies includes air transportation and multiple fly-in lodges. These companies operate fishing, bear viewing and sight-seeing tours to places like Katmai National Park’s “Valley of Ten Thousand Smokes.”

BRISTOL BAY REGION PER CAPITA INCOME



Sources:
 Census.gov and
 Federal Reserve
 Banks, 2023 and
 2024

While Alaska’s per capita income (money received by residents) was \$75,247 in 2024, its per capita real Gross Domestic Product (GDP), the value of goods and services produced per person, was \$74,150. Ranking 10th highest in the nation, Alaska’s GDP is a broad measure of the region’s economic output and standard of living.

THE SBA 8(A) PROGRAM

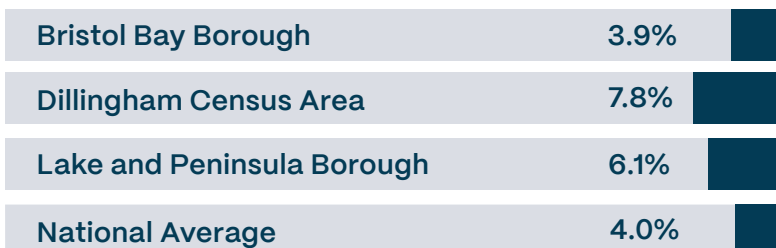


U.S. Small Business
 Administration
8(a) Certified

In 1986, Congress authorized Alaska Native Corporations (ANC) to participate in the Small Business Administration 8(a) Business

Development Program. Through this program, ANCs have diversified, expanding into the government services sector by utilizing their growing business acumen as well as the government’s commitment to stimulate economic development. In Alaska, the 8(a) program is one of the most important programs utilized by ANCs to generate revenue and provide sustainable distributions and other benefits to their shareholders.

BRISTOL BAY ANNUAL UNEMPLOYMENT RATES



Source: State of Alaska Department of Labor and Workforce Development, 2024

Regional Infrastructure

HOUSING

In Dillingham, the largest community, the median house value in 2023 was \$306,800. Median gross rent was about \$1,085 a month. Bristol Bay Housing Authority, one of 16 regional housing authorities in Alaska tasked to provide safe, affordable housing, has built more than 500 single family homes and apartments in the region with funds provided by the U.S. Department of Housing and Urban Development's Office of Native American Programs and the Alaska Housing Finance Corporation.

LOGISTICS

Supplies are brought in by barge or air. Mail is flown to hub communities and transferred to villages by small plane. Ports and harbors are also vital. Barge service is limited to the summer months. Freight is barged to Dillingham or Naknek, where smaller barges deliver to more remote villages. Ports and harbors also support the commercial fishing industry.

WATER, SEWER, AND SOLID WASTE DISPOSAL

Running water and waste disposal are still challenges in many rural Alaska communities. Through the mid-1960s, many residents carried their drinking water and used honey buckets for their toilets, resulting in waterborne illnesses and deaths. The Public Health Service responded to help fund and build individual well and sewer systems. Landfills are being constructed to contain solid waste away from wild animals and away from villages.

TRANSPORTATION

Bristol Bay is not connected to the road system, and is reached only by air or water, transporting people and freight to and from the region's hub communities to the rest of Alaska. A network of small aviation operations and seasonal barge services, small boats, and snowmachine trails connects the region's small communities to the hubs. Emergency medevac services are provided throughout the region and are coordinated through Bristol Bay Area Health Corporation or Southcentral Foundation.



Bay Facts

- ◆ There are 4,602 housing units in the three census areas.
- ◆ Most villages and communities in Bristol Bay have landfills.
- ◆ A honey bucket is a five-gallon container used as a toilet and emptied into a designated sewage lagoon. While honey buckets are still used, efforts are being made to provide safer and more sustainable sanitation solutions for residents.

Energy and Fuel Costs

The majority of private, public, and commercial facilities in the region use fuel for heat and diesel to generate electricity. In addition, gasoline is essential for transportation and subsistence activities. While prices fluctuate, they are typically much higher than the national average. For example, in January 2025, the average national price of gas was \$2.95/gallon while the average price was \$6.87/gallon in Southwestern Alaska.

Alternative sources of energy are being explored. Some residential homes and commercial buildings supplement space heating with wood biomass, or use wood stoves as a back up heat source. The Bristol Bay Housing Authority is working with home owners to weatherize houses and build energy-efficient homes.

ALTERNATIVE ENERGY

A number of communities have operational diesel offsets from alternative energy infrastructure. "Run-of-the-river" hydroelectric projects have successfully harnessed Bristol Bay's natural river resources to generate power without a large dam or reservoir for water storage. Several additional energy projects are proposed or in exploration stages, as is the development of a utility cooperative.



RUN-OF-THE-RIVER HYDROPOWER

Operational in Iliamna, Newhalen, Nondalton, Chignik Lagoon, and Igiugig. Proposed for Dillingham and surrounding communities and Port Heiden.



HEAT RECOVERY

Togiak

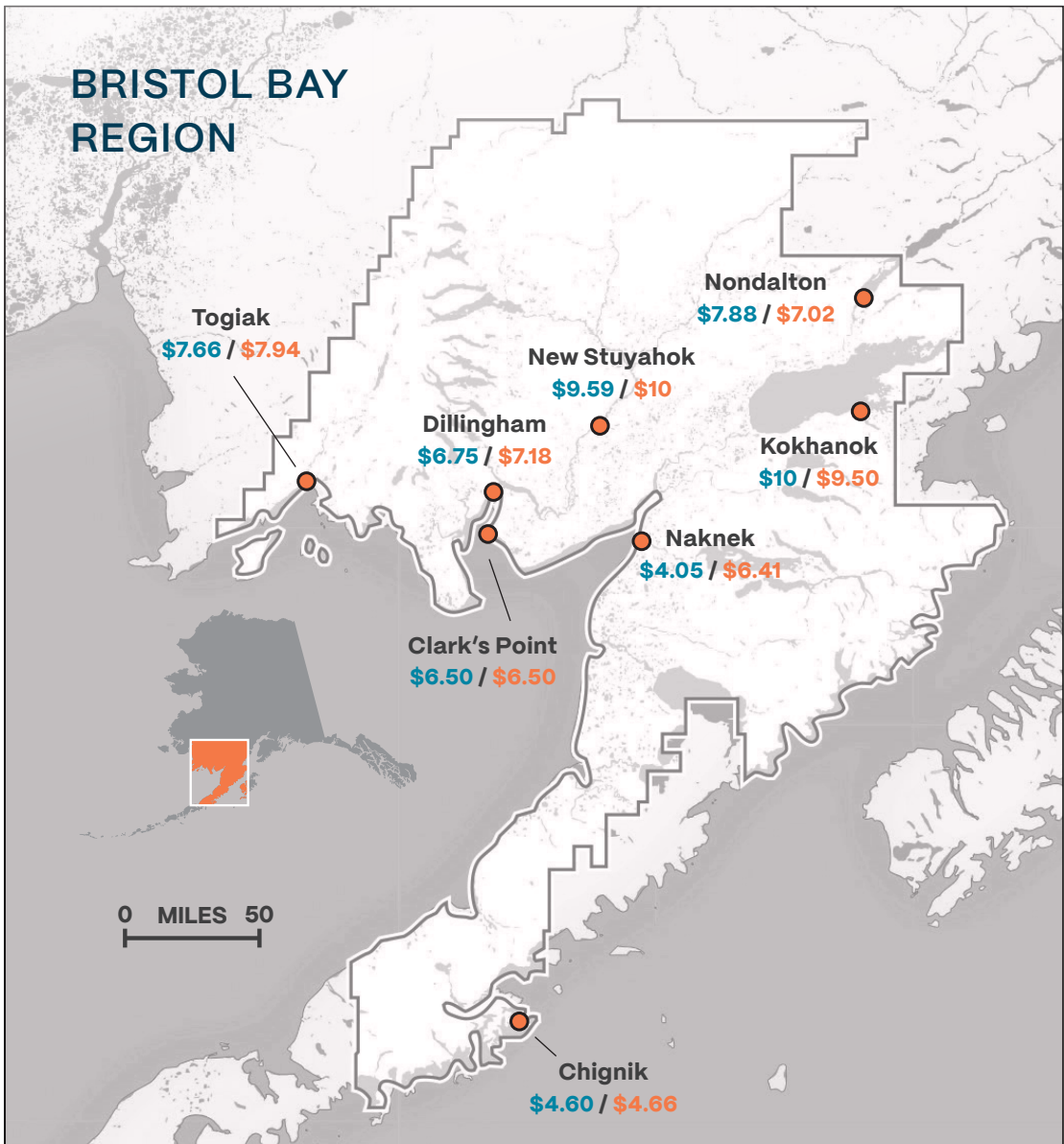


WIND POWER/BATTERY ENERGY STORAGE SYSTEM (BESS)

Operational in Pilot Point and Kokhanok.

Sources: Department of Energy, Alaska Energy Authority, Bristol Bay Economic Development Corporation

Home Heating Fuel / Gasoline (cost per gallon)



Source: Alaska Fuel Price Report: Winter 2025; Alaska Department of Commerce, Community, and Economic Development; and local sources 2026

Bay Facts

- ◆ The Power Cost Equalization (PCE) Program, administered by the Alaska Energy Authority, provides credits to eligible rural utilities to reduce the cost of electricity for residential customers and community facilities. Despite this assistance, rural electric costs remain about 2–3 times higher than in Alaska’s urban areas.
- ◆ In the Bristol Bay region, 20 utilities participate in the PCE program, representing 23 Bristol Bay communities.

Education

There are four school districts in the Bristol Bay region that provide primary and secondary education and receive supplemental funds from federal grants and programs. Most communities have a primary school and some have a high school. Many schools have 20 or fewer students with a range of grade levels in one classroom. Cultural sensitivity is a must, and teachers structure the school year around subsistence activities.



Bay Facts

- ◆ The University of Alaska Fairbanks–Bristol Bay Campus, located in Dillingham, provides postsecondary opportunities with satellite offices in King Salmon, Togiak and New Stuyahok.
- ◆ Students also attend the Southwest Alaska Vocational Education Center (SAVEC) in Naknek.
- ◆ If enrollment at a village school drops to fewer than 10 students, it is closed, and families typically move to a larger community.





Bristol Bay Foundation's (BBF) mission is provide support for and encourage shareholders to pursue educational opportunities and to promote and preserve cultural heritage. Since 1986, BBF has awarded thousands of scholarships to students with ties to the Bristol Bay region, along with grants to support cultural heritage activities like culture camp, dance groups, and extracurricular activities.

BBF provides:

- ◆ **Higher Education scholarships:** financial awards for first year to post-graduate degrees.
- ◆ **Career Focused Vocational Education scholarships:** financial awards for students pursuing long-term vocational training.
- ◆ **Cultural Heritage grants:** awards to nonprofits, tribes and schools to provide activities that preserve Native cultural heritage.
- ◆ **Native Place names:** awards to document and celebrate Alaska Native place names in Bristol Bay.

Each June, BBF hosts *Neqa in Bristol Bay*, a signature fundraising event and celebration of resilience, culture, and shared commitment to a more empowered future for Bristol Bay and its people.

Bristol Bay Partners

The Bristol Bay partnership is united on the shared values, opinions, and concerns of regional residents. The partnership of the five regional organizations works to further common goals, uniting a vast, diverse area that has many cultural, economic, and social differences.

BRISTOL BAY NATIVE CORPORATION

"Enriching our Native way of life."



Bristol Bay Native Corporation (BBNC) commitment is to enrich the lives of its people through economic development, employment and educational opportunities, and responsible resource management.

Since ANCSA was signed in 1971, BBNC's leadership has taken their knowledge of the land and culture and built a diversified corporation with more than \$3 billion in annual revenue. BBNC seeks out profitable projects worldwide to provide opportunities and benefits for shareholders and their families.

BRISTOL BAY NATIVE ASSOCIATION

Bristol Bay Native Association (BBNA) is a Tribal Consortium, made up of 31 tribes and is organized as a nonprofit corporation to provide a variety of educational, social, economic, and related services to the tribes and Native people of the Bristol Bay region of Alaska.



BBNA's mission is to maintain and promote a strong regional organization supported by the tribes of Bristol Bay to serve as a unified voice to provide social, economic, cultural, educational opportunities, and initiatives to benefit the tribes and the Native people of Bristol Bay.

BRISTOL BAY AREA HEALTH CORPORATION



The **Bristol Bay Area Health Corporation (BBAHC)** is a nonprofit private corporation organized by a consortium of Bristol Bay tribes to provide health and educational services in the Bristol Bay region. BBAHC manages community health programs and services throughout the region, including the Kakanak Hospital and federal qualified health centers (FQHC). BBAHC primarily operates with funding from the Indian Health Service, federal and state grants, and revenue from private insurance, self-pay, Medicaid, and Medicare.

BRISTOL BAY HOUSING AUTHORITY

Bristol Bay Housing Authority's (BBHA)

mission is to eliminate substandard housing conditions through the development of local capacities that will provide safe, decent and affordable housing opportunities for the Native population of Bristol Bay.



BRISTOL BAY ECONOMIC DEVELOPMENT CORPORATION



Bristol Bay Economic Development Corporation's (BBEDC) mission is to promote economic growth and opportunities for residents of its member communities through sustainable use of the Bering Sea resources. The organization is the regional Community Development Quota (CDQ) group for the Bristol Bay region — a federal effort to sustain the Bering Sea's rich offshore fishery resources and more widely distribute their benefits to communities in Western Alaska.

Sources

Alaska Department of Commerce,
Community and Economic
Development; Community Database
Online; Alaska Economic Trends; Web

Alaska Department of Fish and Game
Commercial Operators Annual Report

Alaska Department of Fish and Game

Alaska Village Electric Cooperative

State of Alaska Dept of Labor and
Workforce Development, 2024

Alaska Energy Authority

The Alaska Fuel Price Report, Winter
2025

American Community Survey 2023

ANCSA Regional Association

Bristol Bay Foundation

Bristol Bay Native Association

Bristol Bay Economic Development
Corporation

Bristol Bay Native Corporation

Congressional Research Service
Report

Economic Benefits of Bristol Bay
Salmon, 2021, McKinley Research

National Oceanic and Atmospheric
Administration

University of Alaska Fairbanks
Modern Tribal Governments in Alaska

U.S. Census Bureau; State and
County QuickFacts; Web

U.S. Dept. of Energy

U.S. Energy Information
Administration

U.S. Federal Reserve Banks; Web

U.S. Geological Survey

RESOURCE WEBSITES

adfg.alaska.gov

akenergyauthority.org

alaska.gov

alaskanative.net

ancsaregional.com

avec.org

bbahc.org

bbedc.com

bbna.com

bbnc.net

bristolbayonline.com

census.gov

data.census.gov

eia.gov

epa.gov/bristolbay/about-bristol-bay

everycrsreport.com

mckinleyresearch.com

noaa.gov

pebblewatch.com

statista.com

uaf.edu

usgs.gov









WWW.BBNC.NET

111 W 16th Avenue, Suite 400
Anchorage, AK 99501

T 907.278.3602 F 907.276.3924